



# Northern Great Plains Program

## NFWF CONTACTS

**Seth Gallagher**

Program Director,  
Grasslands and Mountain West  
seth.gallagher@nfwf.org  
303-222-6483

**Dani Tinnin**

Manager,  
Rocky Mountain Regional Office  
dani.tinnin@nfwf.org  
202-677-3463

## PARTNERS

- Bezos Earth Fund
- Margaret A. Cargill Philanthropies
- Altria
- Cargill
- Nestlé
- Sysco
- Burger King
- Capri Holdings
- Occidental
- Marathon Oil
- U.S. Fish and Wildlife Service
- U.S. Forest Service
- Bureau of Land Management
- USDA Natural Resources Conservation Service

## ABOUT NFWF

The National Fish and Wildlife Foundation (NFWF) works with partners to foster sustainable and impactful conservation solutions so that people and nature thrive together. Chartered by Congress in 1984, NFWF has grown to become the nation's largest conservation foundation. Since its founding, NFWF has funded more than 23,900 projects that have generated a total conservation impact of \$12 billion.



Grasshopper sparrow

## BACKGROUND

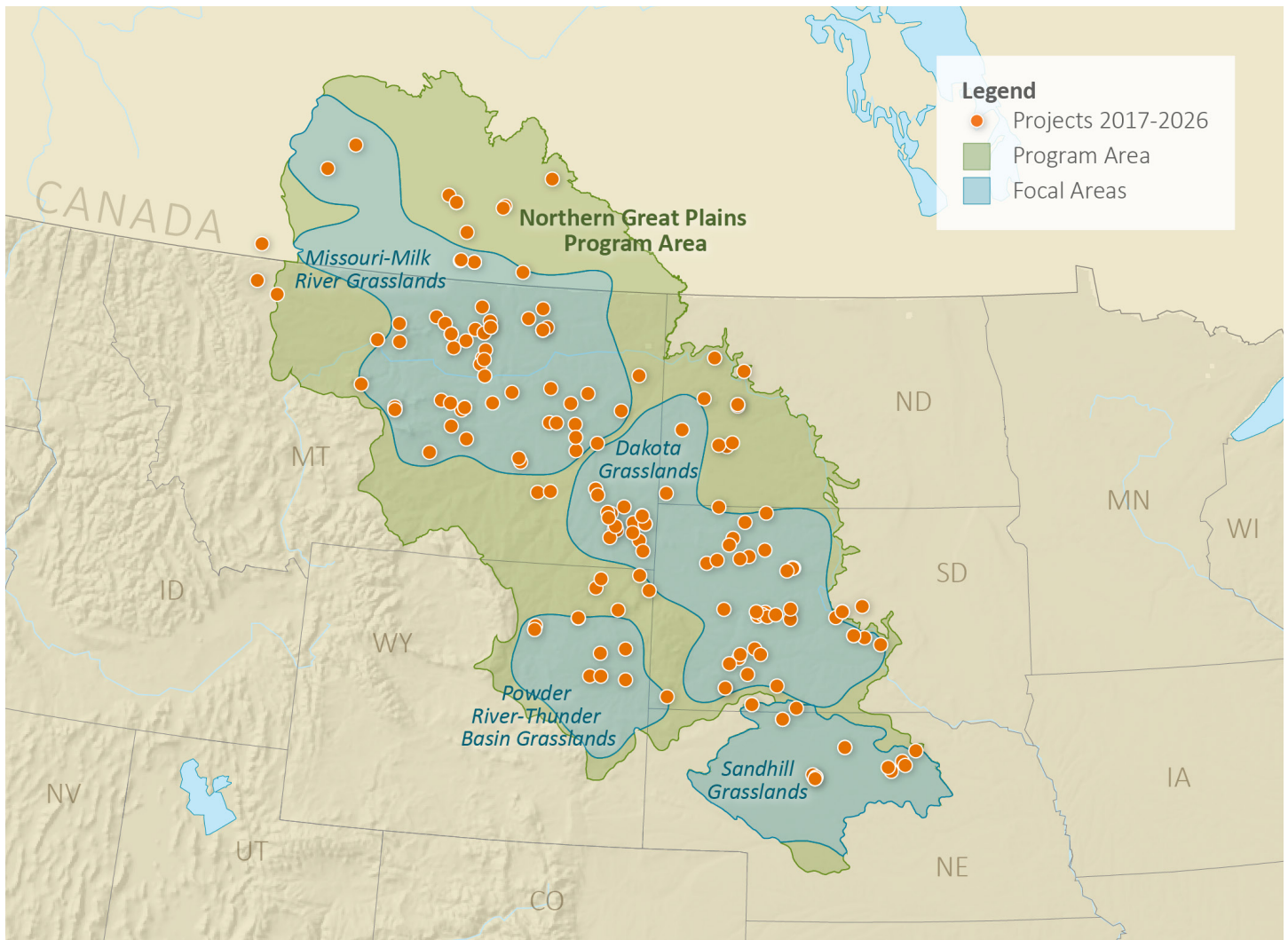
The vast grasslands of the Northern Great Plains support an assemblage of wildlife adapted to the wide-open spaces. Thanks to generations of land stewardship by ranchers, Tribes and public agencies, much of the Northern Great Plains remains as native grassland that is productive for people and wildlife.

Despite changes to the landscape, uniquely adapted grassland species continue to co-exist. Thousands of sage-grouse, with their distinctive leks and mating dance, are scattered across the landscape. Herds of pronghorn migrate widely across the open country between their summer and winter habitats. A variety of bird species found nowhere else in the world migrate from the southern United States and Mexican grasslands to the short- and mixed-grass prairies of the Northern Great Plains to breed and raise their young.

The National Fish and Wildlife's (NFWF) Northern Great Plains Program works through public-private partnerships to sustain and improve interconnected grasslands and healthy populations of grassland-obligate species, while fostering sustainable livelihoods and preserving cultural identities.

Major funding partners include Bezos Earth Fund, Margaret A. Cargill Philanthropies, Altria, Cargill, Nestlé, Sysco, Burger King, Capri Holdings, Occidental, Marathon Oil, U.S. Fish and Wildlife Service, U.S. Forest Service, Bureau of Land Management and USDA Natural Resources Conservation Service. Since 2016, the program has funded 185 projects with a total investment of more than \$82.3 million, which has been leveraged by more than \$93 million in matching contributions from grantees for a total conservation impact of \$175.2 million.

*(continued)*



### CONSERVATION IMPACT

As identified in the Northern Great Plains Business Plan, the program seeks projects that address the following desired outcomes.

#### Demonstrate successful models for grassland habitat conservation that:

- Increase grasslands connectivity through permanent conservation efforts such as conservation easements and grass banking that maintain working ranches and restrict subdivision and sod-busting activities
- Increase grasslands through habitat restoration efforts (reseeding, removal of woody invasives, prescribed fire, etc.)
- Improve management at large scales that facilitates persistent long-term behavior changes that benefit grasslands and focal species

#### Improve population levels and related outcomes for grassland species through projects that:

- Identify and address limiting factors for grassland obligate songbirds such as Baird's sparrow, Sprague's pipit, chestnut-collared and thick-billed longspur, and lark buntings

- Promote black-footed ferret conservation through the distribution of sylvatic plague vaccine in targeted prairie dog colonies
- Improve landscape permeability for pronghorn by removing and modifying fence and installing structures to minimize mortality at road crossings and bottleneck sites
- Sustain populations of greater sage-grouse through meadow restorations and fencing removal or marking around key leks in Sage-Grouse Focal Areas

Applications for projects that make investments in focal areas based on partner interests and conservation opportunities will be accepted through annual requests for proposals that will occur in the late summer or early fall. Eligible applicants include nonprofit, tribal and governmental conservation entities in the region.'

Since 2016, our investments in the Northern Great Plains have restored more than 548,765 acres, removed or improved 905 miles of fencing to wildlife-friendly specifications, placed more than 902,376 acres under conservation easement and improved management on nearly 4.7 million acres of habitat.